



INTERNATIONAL
NETWORK
OF UNIVERSITIES

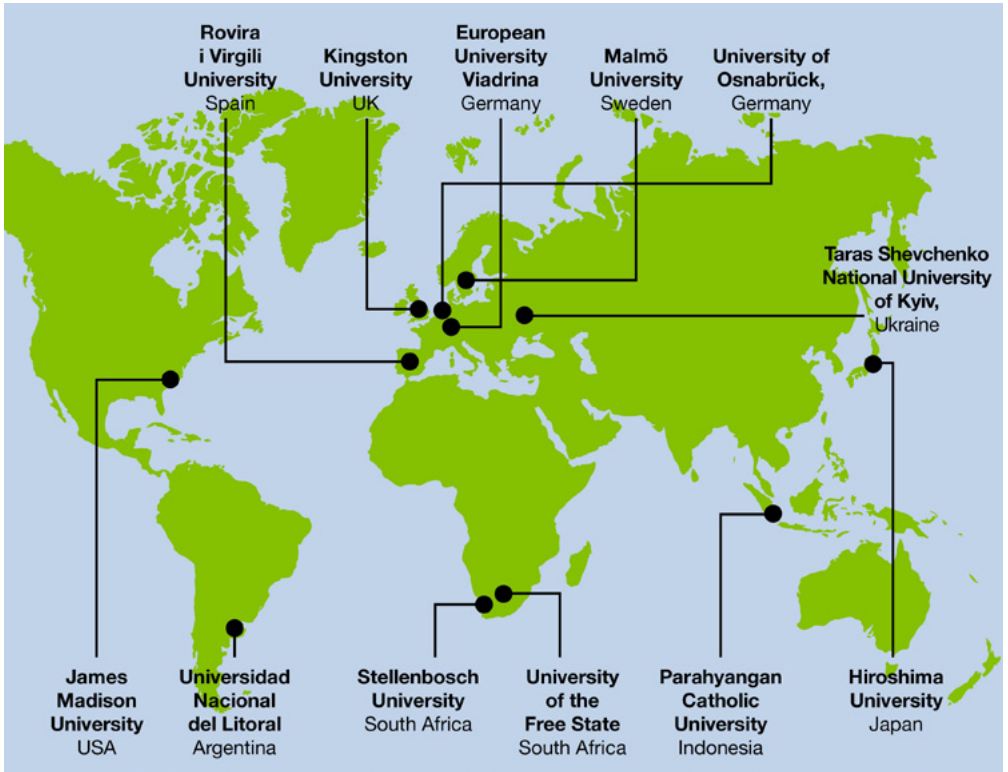


INU Impact Report

The Network for Global Engagement



A truly global network



INU Member Universities (As of January 2026).

Members

- 12 member universities
- 10 countries represented worldwide

Governance

INU Council

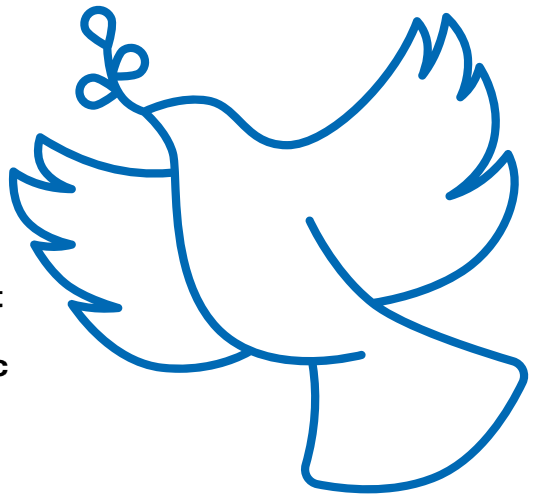
- The network is governed by INU Executive Committee and INU Council, both of which meets twice a year (Once online and once in person)
- Each INU member has two appointed representatives on the INU Council

Coordination

- The network's activities are organised by the INU Coordinator, currently based at Kingston University (UK)

INU Presidency

- INU Presidency rotates every two years. From 2025–28, the presidency is held by Stellenbosch University, South Africa. INU Presidency has previously been held by European University Viadrina (Germany), Kingston University (UK), James Madison University (USA) and Malmö University (Sweden)



The International Network of Universities (INU) is a global consortium of universities built upon our shared beliefs in academic freedom, democratic values, inclusivity and sustainability.

INU facilitates responsible global partnerships between its members, where we see the world as open.

INU offers truly global experiential learning through a rich array of jointly delivered intercultural activities. These experiences benefit from each university's expertise and advance the global engagement of faculty, students and staff.

Strategic Priorities:

- 1. Enabling innovative international education and research collaboration** both bilateral and multilateral.
- 2. Promoting intercultural learning and global citizenship** to equip students and staff with the skills they need to meet the challenges facing the world today
- 3. Informing practice and policy by sharing exchange of knowledge and best practice** through meaningful connections between university leadership and staff across member universities around the world

Celebrating 25 years of INU

INU was founded in 1998 by two Australian Vice-Chancellors at La Trobe University and Flinders University.

To mark this 25th anniversary, INU held a University Leaders' Summit, in August 2023, hosted by Hiroshima University, Japan with leaders from 9 INU member universities attending.

The summit was a demonstration of our universities' commitment to global engagement at the highest level. It gave the opportunity to forge stronger links between INU member universities at the most senior level of our member institutions and to go beyond our already significant INU activities in furthering our internationalization strategies, facilitating international research collaborations, student and staff mobility and exchange of best practice and expertise across member universities.

The Summit focused on ‘The role of Universities in internationally changing political and social contexts’, considering how universities can navigate the challenges in their political surroundings, whilst making an impact on society.

In this intimate forum, the INU Leaders’ Summit brought an opportunity to open dialogue on matters which affect universities and their students most greatly. It addressed the role of universities beyond education and research; the role of the university as a key driver of social change, as protectors of democratic rights and freedom of speech, challenging inequalities and upholding social justice, in often complex political backdrops. Working together as a collective of universities, INU members are ideally placed to drive meaningful change in both a local, regional and global context.

International Student Seminar for Global Citizenship and Peace

The International Student Seminar for Global Citizenship and Peace is a unique immersion program which is hosted by Hiroshima University in Japan. The seminar welcomes students from around the world from INU member universities and is structured around the 6th August commemoration of the atomic bombing of Hiroshima.

The 10-day program has a different theme each year and includes workshops, lectures and small group discussions. The program

also offers field trips to local attractions and cultural learning experiences and culminates in a United Nations role play where groups of students represent different countries and negotiate to pass a draft resolution relating to the theme of the seminar.

The Student Seminar provides students with a working knowledge of global citizenship and peace with a focus on cross-disciplinary problem solving of real-world political, economic, social, and cultural problems.

The seminar focuses on a different theme each year and attracts students from all disciplines.

Themes:

- **2026:** The UN SDGs and sustainable economic development
- **2025:** Nuclear Disarmament and Non-Proliferation
- **2024:** World Peace and Political Justice
- **2023:** Climate Emergency and Action
- **2022:** The Age of Artificial Intelligence: Opportunities and Concerns
- **2021:** Global Inequalities – Bridging the Gaps



International Student Conference

The International Student Conference (ISC) has been running annually since 2013, and is organised and hosted by Parahyangan Catholic University, Indonesia.

International Student Conference (ISC) provide a learning platform for students from all over the world by incorporating various learning methods on specific current issues related to the broader theme of Global Citizenship.

Themes:

- **2026:** “Living with AI: Youth Navigating Innovation, Ethics and Impacts”
- **2025:** “Innovating, Shaping, and Pioneering the Future of Learning: Empowering Youth Voices”
- **2024:** “Empowering Youth and Local Voices for Human-Centric, Sustainable and Inclusive Smart Cities”

“The International Student Conference pushed me to test my existing beliefs, expand my knowledge of what I thought I already knew, cultivate the way I approach problems and solutions, and build connections with people that will leave a lifelong impact on me.”

Shukrana Shukrullah, James Madison University (USA), International Student Conference

Staff Knowledge Exchange

This program is for administrative and professional services staff to strengthen links between INU member universities, exchange best practice and develop joint projects.

All professional services areas are included. Past visits have taken place between library staff, admissions, accommodation, program management, student counselling, human resources to multimedia production – to name a few!

150 participants to date (June 2026)

This program is a demonstration of INU members’ commitment to internationalization across all aspects of their universities – beyond teaching and research.



“I cannot recommend the INU’s Staff Knowledge Exchange programme highly enough, especially to administrative and support staff. I extend my sincere appreciation for and profound thanks to INU for creating these kinds of opportunities for us, and for putting their trust in me to make the most of mine.”

Lauren Onraët, Postgraduate Programme Coordinator, Stellenbosch University, visited Rovira i Virgili University, Spain





Tua Agustinus Tamba, Assistant Professor of Electrical Engineering at Parahyangan Catholic University, Indonesia, visited Hiroshima University, after being awarded funding under INU's Researcher Mobility Program.

Researcher Mobility Program

- Each year, five Researcher Mobility Awards of £1,700 are available.

The INU's Researcher Mobility Program provides the opportunity for early career researchers who have completed their PhD in the past 5 years to engage in research at another INU member university. The purpose of this program is to develop joint research initiatives between two INU member universities, with a view to further expand to multilateral research collaborations with other INU member universities in future.

Seed Money Funding

- Awards of £2,500 available to start a new project, or develop an existing project

This open seed-funding call supports the development of collaborative projects between INU member universities. Projects should involve two or more INU member universities, and can be in any area, and should seek to further internationalisation and global engagement whether it is an academic or administrative area.

Recently funded projects include:

- **2025:** Gender inequality in the labour market (Led by Universitat Rovira i Virgili, Spain)
- **2024:** Comparing Mental Health Research in USA and Japan (Led by James Madison University, USA)
- **2023:** Scaling Collaborative Design Challenges (Led by Malmö University, Sweden)

Henry Fong Award

The International Network of Universities continues to work towards fulfilling its mission of encouraging global understanding and cooperation between universities and citizens from nations in different economic circumstances, by offering selected outstanding students at INU member universities the possibility to receive an award to facilitate a visit to another INU member university for a study opportunity.

This award is possible due to the generous contribution of Dr. Henry Fong Yun-Wah (1924-2022), who was a prominent Hong Kong business leader and philanthropist. His support of education was recognised by numerous universities in China, including Hong Kong, Australia, Canada, Scotland and the USA.



employability skills (Global Graduates, Global Skills: Intercultural Learning for Future Employability)

Since 2019 when the group was established, ILGE has organised various online and in-person conferences relating to intercultural competencies and global engagement, drawing on best practice from across INU member universities. Themes have included:

- Collaborative Online International Learning (COIL)
- Inclusive-curriculum initiatives
- Embedding intercultural learning in teaching
- UN SDGs at intersection with intercultural competencies
- Reflection: Deepening the learning experience

Intercultural Learning for Global Engagement Group (ILGE)

Intercultural Learning for Global Engagement group (ILGE) are committed to creating an inclusive curriculum for students, reflecting the rich diversity of cultures around the world. Through the network, we bring together expertise and experience from our member universities to enable students and staff to develop intercultural understanding and a global perspective.

In 2026-7, the ILGE group are preparing online workshops; for staff, the workshop will focus on AI and Ethics (From Bias to Belonging: Ethical AI for Intercultural Education), and for students, a workshop on the theme of intercultural learning and

The in-person conference hosted by Malmö University in Sweden welcomed a special guest session from internationally recognised expert, Dr Darla Deardorff (who is currently the chairholder of the UNESCO Chair of Intercultural Competences at Stellenbosch University) discussing Intercultural and Global Competence.





Joining INU network

INU welcomes expressions of interest from Universities interested in joining the network who:

- Have a forward-thinking international strategy aligned with INU values
- Have a commitment to global citizenship and engagement
- Demonstrate a commitment to active involvement and participation in INU activities
- Can offer a clear contribution to the INU mission and activities
- Add to the breadth of geographical representation of INU
- Hold a wide portfolio of courses
- Have active participation and commitment of senior management in international activities.

Please contact INU Coordinator for further information on the application process.



Global Citizenship and Sustainable Futures: Learning for Change

This online program, launched in 2024, offers an introduction to UN's SDGs and develops students competences in engaging across cultures. The program will help students explore what it means to be a global citizen through learning and reflecting on a range of key global issues, including:

- Borders, modern slavery and human mobility
- Peace education and reconciliation
- Climate change and social inequalities
- Food security
- Gender inequality and violence against women
- Circular Economy and single use plastics

Sessions will be delivered jointly by faculty from INU member universities, bringing expertise and insights from across the network.

Further information

INU Coordinator:
inu@kingston.ac.uk

INU Website:
www.inunis.net

