

STRATEGIC PRIORITIES 2025



INTERNATIONAL
NETWORK
OF UNIVERSITIES



International Network of Universities

Strategic Priorities

The aim of this document is to outline the purpose of the network and its strategic priorities. This derives from the existing mission and vision of INU, developing further our priorities and providing a financial framework for allocation of funds for projects.



The International Network of Universities (INU) is a global consortium of universities built upon our shared beliefs in academic freedom, democratic values, inclusivity and sustainability. INU facilitates responsible global partnerships between its members, where we see the world as open.

INU offers truly global experiential learning through a rich array of jointly delivered intercultural activities. These experiences benefit from each university's expertise and advance the global engagement of faculty, students and staff.

Strategic Priorities 2025

1.

Enabling innovative international education and research collaboration both bilateral and multilateral.

Promoting intercultural learning and global citizenship to equip students and staff with the skills they need to meet the challenges facing the world today.

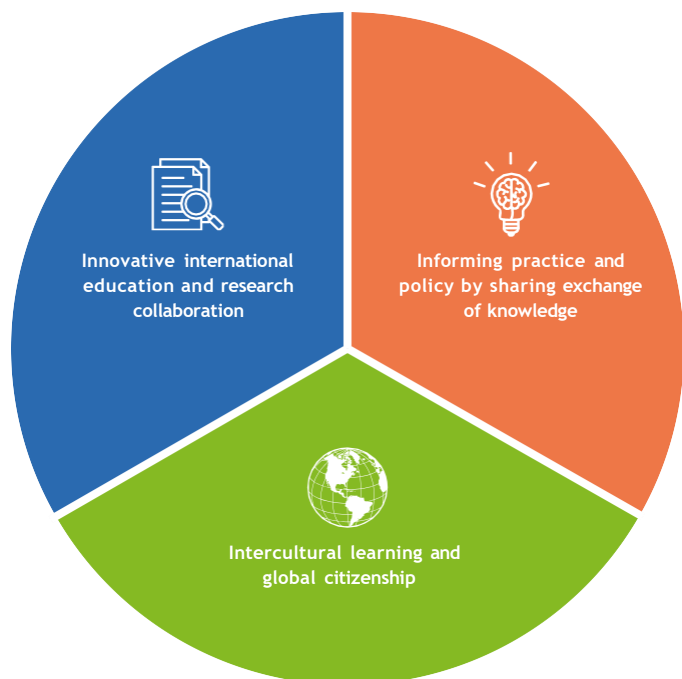
2.

3.

Informing practice and policy by sharing exchange of knowledge and best practice through meaningful connections between university leadership and staff across member universities around the world.



● Priority 1 ● Priority 2 ● Priority 3



Achieving Strategic Priorities



STRATEGIC PRIORITY 1



Enabling innovative international education and research collaboration both bilateral and multilateral.

Key actions:

- Collaborative educational programs and projects, including summer schools, conferences and online activities for students and staff.
- Nurturing the growth of early career researchers through international connections with aligned research interests at INU member universities.
- Support for collaborative research projects.

STRATEGIC PRIORITY 2



Promoting intercultural learning and global citizenship to equip students and staff with the skills they need to meet the challenges facing the world today.

Key actions:

- Transformative programs, with peer-to-peer engagement to deepen cross-cultural understanding.
- Co-delivered and co-designed programs drawing on the breadth of expertise of INU member universities, embedding global citizenship values, intercultural competences skill development, underpinned by the sustainable development goals.
- Designing an offer of both physical mobility and virtual collaboration to ensure accessible and sustainable intercultural opportunities for all.
- Student focused activities embed global citizenship values, aiming to develop intercultural competences, underpinned by the sustainable development goals.

STRATEGIC PRIORITY 3



Informing practice and policy by sharing exchange of knowledge and best practice between member universities around the world.

Key actions:

- Support to programs which facilitates staff development for administrative and professional services staff.
- Providing opportunity for member to establish interest groups to share experiences and explore co-creation projects.
- Open dialogue at INU round tables, developing valued connections between university leadership.

Member

Universities

**Kingston
University**
London

Kingston University,
UK



EUROPA-
UNIVERSITÄT
VIADRINA
FRANKFURT
(ODER)

European University
Viadrina, Germany

JMU
JAMES MADISON
UNIVERSITY®

James Madison
University, USA



HIROSHIMA UNIVERSITY

Hiroshima University,
Japan



MALMÖ
UNIVERSITY

Malmö University,
Sweden



UNIVERSITAS
KATOLIK
PARAHYANGAN

Parahyangan Catholic
University, Indonesia



Taras Shevchenko National
University of Kyiv, Ukraine



Stellenbosch
UNIVERSITY
IYUNIVESITHI
UNIVERSITEIT

Stellenbosch
University, South Africa



UNL
UNIVERSIDAD
NACIONAL
DEL LITORAL

Universidad Nacional del
Litoral, Argentina

OSNABRÜCK  UNIVERSITY

University of Osnabrück,
Germany



UNIVERSITAT
ROVIRA I VIRGILI

Rovira i Virgili University,
Spain

Contact

INU Coordinator
Kingston University London (UK)
Phone: +44 (0)20 8417 3256
Email: inu@kingston.ac.uk



INTERNATIONAL
NETWORK
OF UNIVERSITIES

STRATEGIC
PRIORITIES
2025

