

INU

International Network
of Universities

Supporting the
development of
globally engaged
citizens





INU INTERNATIONAL
NETWORK
OF UNIVERSITIES
The Network for Global Engagement



**DE MONTFORT
UNIVERSITY**
LEICESTER



JMU
JAMES MADISON
UNIVERSITY

**Kingston
University**
London



**MALMÖ
UNIVERSITY**



UNIVERSITEIT
TYUNIVESITHI
STELLENBOSCH
UNIVERSITY

100
1918-2018



UNIVERSITAT
ROVIRA I VIRGILI



**UNIVERSIDAD
NACIONAL DEL
LITORAL**



Who are we?

The INU is a global consortium of universities, who actively seek international partnerships and experiences, create innovative programming and delivery methods, and embrace the internationalisation movement.

The INU activities focus on:

- Advancing internationalisation of member universities
- Preparing students for lives and careers as global citizens
- Engaging students and staff in international mobility programs



Network Services

University members of the INU Network have a range of services available to them which include a calendar of international programs and events for students and staff. This not only focuses on the goal of creating global citizens but increases universities' overall mobility metrics.

The INU brings its members together by encouraging bilateral agreements to increase student exchanges.

The INU is active in helping members with innovative projects. The Seed Fund Money is an open call to staff seeking creative ideas that support internationalisation and global engagement within the INU. We assist groups in applying for additional funding such as ERASMUS+ grants and publishing papers.

Administrative staff also have the opportunity to undertake the staff shadowing program, which strengthens the links between members. Staff can visit respective member institutions to share best practice and learn from each other.

If you would like more information about the International Network of Universities or would like your institution to be considered for membership, please contact:

INU Coordinator
E INU@kingston.ac.uk
T +44 (0)20 8417 3256

Background

The INU was founded in 1998 by two Australian vice-chancellors with the purpose of meeting the growing needs for internationalisation of higher education institutions. “Internationalisation” and “Global Citizenship”. Over the last 20 years, the International Network of Universities (INU) has helped to transform thousands of students’ lives by hosting international seminars and cultural learning experiences. During this time the INU

has also facilitated opportunities for over one hundred staff and assisted staff to developed research in important sectors.

The key drive for INU members is to collaborate in a high impact Higher Education network which supports students from all walks of life to become globally engaged citizens.

Vision

To be a vibrant higher education network that combines the resources and perspectives of its members in mutual support of the advancement of globally engaged citizens.

Mission

The INU is a global platform where members work collaboratively to provide transformative experiences that continuously advance the global engagement of students, faculty, and staff.

Value Statement

We value the development of globally engaged and socially responsible change agents who commit to understanding and addressing the complexities of global and local political, economic, social, cultural, and environmental challenges.

Meet the INU Council

De Montfort University, UK

Ian Thomas

Associate Dean International,
Faculty of Business and Law

Leo Smith

Head of Global Mobility

European University Viadrina, Germany

Prof Julia von Blumenthal

INU President

President, European University Viadrina

Torsten Glase

Co-Director International Affairs

Hiroshima University, Japan

Yasushi Maruyama

Vice President (International Exchange)

James Madison University, USA

Dietrich Maune

Interim Executive Director,
Center for Global Engagement

Vesna Hart

Director of International Cooperation

Kingston University, UK

Prof Martyn Jones

Deputy Vice-Chancellor, Kingston University

Joan-Anton Carbonell Porro

Manager, Study Abroad and International
Learning Office

Malmö University, Sweden

Cecilia Christersson

Pro Vice-Chancellor for Global Engagement
and Challenge-Based Learning

Karin Frydenlund

Head of International Office

Stellenbosch University, South Africa

Prof Hester Klopper

Deputy Vice-Chancellor: Strategy
and International

Ms Sarah Van der Westhuizen

Manager: Global Education Centre

Universitat Rovira i Virgili, Spain

John Style

Vice-Rector for Internationalization

Marina Casals

Head of International Center

Universidad Nacional del Litoral, Argentina

Miguel Rodriguez

Director of International Cooperation

Pedro Sanchez Izquierdo

Secretario General

Universitas Katolik Parahyangan, Indonesia

Mangadar Situmorang

Rector

Sylvia Yazid

Head of Office of International Affairs
and Cooperation

Programmes, Projects and Activities

2020 – A shift in a new direction

As those working in the international education sphere will know, 2020 brought student and staff global mobility to a standstill in many parts of the world, due to the COVID-19 pandemic.

Like others, INU adapted its approach to its activities. INU Council meetings were held online, rather than in-person, and it enabled us to explore different activities for our members, which have brought many benefits.

Whilst staff shadowing and student seminars were put on hold in 2020, due to restrictions on mobility, various online activities were held which were accessible to a wider audience and enabled more faculty to benefit from the connections.

The Intercultural Learning sessions for academic staff and students, delivered by the ILGE group, were particularly well received and an example of good practice of collaboration across INU members.

The Virtual Exchange training programme for academic staff, funded by INU, was also a new activity, enabling colleagues to

engage across institutions and explore possible partnership opportunities.

We look forward to resuming international mobility programmes as soon as circumstances allow, whilst continuing to explore the role which sustainable internationalisation may play going forward.

Staff

- INU Staff Shadowing
- INU Seed Money Fund
- Researcher Mobility Program
- Intercultural Learning through Global Engagement (ILGE)

Students

- Student Seminar for Global Citizenship and Peace
- Master's Summer School for Global Citizenship and Peace
- International Student Conference on Global Citizenship
- Henry Fong Award for Global Citizenship and Peace
- INU Global Internship Program

INU Presidency 2021-2023

INU welcomed a new President in 2021, Prof Julia Von Blumenthal, President at European University Viadrina, Germany.

A Council meeting with the new President was held in April 2021, where Prof Von Blumenthal shared her views on sustainable internationalisation, the importance of multilingualism and the expansion of the network to create a global balance of members.

Julia commented that:

“The last year’s overwhelmingly national reactions to the pandemic have reminded us how fragile international solidarity and cooperation are. INU as a truly global network with a long tradition of intensive dialogue, the exchange of perspectives and cooperation across borders is more needed than ever. By engaging students and researchers we contribute to the active role Universities play for their societies and for the fight against global challenge.”

Governance

INU Presidency

The INU presidency rotates between members every two years. For 2021-2023, the presidency is held by European University Viadrina (Germany). Prior to this, the INU presidency was held by Kingston University (UK), James Madison University (USA), Malmö University (Sweden) and LaTrobe University, (Australia).

The INU Council

The INU Council, which is formed of representatives from all INU members, meets twice a year. The spring meeting mainly serves to plan and discuss the summer student program and update on any other ongoing activities. At the autumn meeting, the group decides on the annual plan for the next year and assesses the impact of recent activities and considers potential new initiatives.

The INU Executive Committee

The INU Executive Committee is an advisory committee of the INU Council and is formed of the INU President, INU Coordinator and a minimum of three member institutions elected by the Council. It helps coordinating INU activities and is responsible for the implementation of the decisions of the Council.

Coordination of INU activities

The INU Coordinator is based at Kingston University (UK). The coordinator is responsible to plan and coordinate the INU mobility programs and activities, joint research activities, internal meetings, and joint grant applications. The INU Coordinator is also the point of contact if you want to find out more on how your university can join the network.

INU Council Meeting hosted by Universitat Rovira i Virgili, Spain in January 2020



Staff shadowing

Staff shadowing has been unable to go ahead due to restrictions in global mobility in recent months, however we hope to resume this activity soon.

The INU Staff Shadowing Program aims to strengthen the links between members by providing staff with the opportunities to share initiatives and benchmark administrative and governance systems across member universities. Through the visits, both the sending and the hosting universities benefit from sharing best practices. The program allows staff members to spend one or two weeks with another INU member university to “shadow” a colleague at the hosting universities.

All INU member universities are invited to participate in the INU Staff Shadowing Program.

Areas of interest

The Staff Shadowing Program focuses on the following areas; however, others can be added if members express sufficient interest.

- Alumni Relations
- Finance Management
- International Programs & International Student and Staff Services
- Student Affairs/Student Support Services
- Community Engagement
- Fundraising
- IT Support

- Service Learning
- Library Services
- Human Resources Management
- Research Management

Requirements

- Employed at an INU member university.
- A good working knowledge of English is usually required.

Applications are accepted year-round.

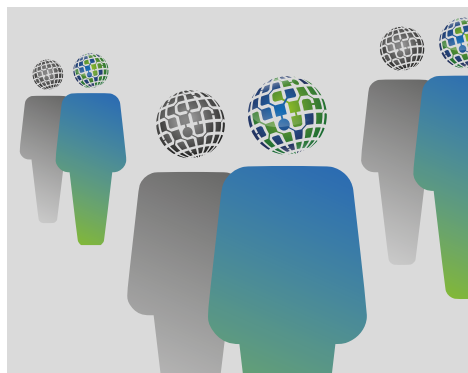
To apply, visit:

inunis.net/staff/inu-staff-shadowing

Sharing the experience

Following the completion of the Shadowing Program, participants will be asked to complete a brief survey reporting about the learning experience.

We are looking forward to receiving your application!



Virtual exchange training program 2021

Faculty from across INU members explore Virtual Exchange (COIL), as part of professional development training funded by the INU.

The INU has funded 13 faculty across its members to participate in professional development training in the field of virtual exchange, which took place in February-March 2021. The aim of the program, delivered by CoreCollaborative International (CCI) in the USA, is design to support faculty in building their capacity to design and deliver virtual exchange programs.

The 13 faculty from INU were part of a group of 25 participants, which included faculty members representing 4 continents and 18 nationalities, from wide array of disciplinary backgrounds from Food Sciences to Film and Business to Nursing.

The faculty undertook 6 modules which introduce academics to virtual exchange and enables them to work in partnership with each other. Modules included Cultivating Intercultural Competence, Designing High Impact Learning Experiences and Making Virtual Exchange Sustainable.

Several new collaborative partnerships have developed among the participants.

One participant commented “We have been able to establish a partnership with a teacher from JMU and we are designing together a Virtual Exchange experience. The course not only has given us the possibility to establish this partnership, but also gave us the tools to design it.”

The training has certainly shown evidence of meeting the objective of the program for INU, which is to build and strengthen the capacity for global virtual exchange within the INU – a step to a sustainable global learning program that is here to stay beyond the global pandemic. It has also been an interesting way for academics across disciplines to explore how they can work collaboratively for the benefit of their students.

“The course offered an accessible introduction to and overview of virtual exchange. The ability to engage in a form of virtual exchange while learning how to create and implement such in our future teaching was an effective means to model these concepts.”

Intercultural Learning through Global Engagement (ILGE)

Intercultural Learning and Global Engagement group (ILGE) are committed to creating an inclusive curriculum for students, reflecting the rich diversity of cultures around the world. Through the International Network of Universities, we bring together expertise and experience from our partner institutions to enable students and staff to develop intercultural understanding and a global perspective.

Following two ILGE conferences in 2019, the first hosted by Universitas Katolik Parahyangan, Indonesia in March 2019 and the second by Malmö University, Sweden, the ILGE group moved activities online for 2020-2021 with a seminar series for both students and staff.

The online Intercultural Learning series delivered sessions on a variety of themes based on expertise from 4 INU member institutions and were extremely well received by faculty and students across the network. Faculty and students welcomed the opportunity to have engaging conversation with those at other institutions, at a time when many feel disconnected from the world outside when working from the home environment during the pandemic.

Intercultural learning sessions 2020-21 for faculty:

- **Inclusive Approach to Online Teaching**
(Panel session with representatives from Kingston University (UK), James Madison University (USA), European University Viadrina (Germany) & Universitas Katolik Parahyangan, (Indonesia))
- **Self-reflection, a tool for higher education**
(European University Viadrina, Germany)
- **Staff and student partnerships: an inclusive approach to curricula development**
(Kingston University, UK)
- **Fostering Intercultural Capacity in Online Global Learning Contexts**
(James Madison University, USA)

Intercultural learning sessions 2020-21 for students:

- **Story Exchange: Stories of overcoming**
(James Madison University, USA)
- **Self-reflection, a boost for learning processes and personal development**
(European University Viadrina, Germany)

The ILGE group is meeting in May 2021 to plan future activities for 2021-2022 for INU member institutions.

www.inunis.net/staff/ilge

Feedback from faculty

“An excellent session which offered a valuable insight and experience into what it might be like to be a student in a virtual learning environment - a really powerful experience.”

“Although having worked in international higher education for almost a decade now, I love how each experience and engagement around intercultural capacity leads to new learning. It truly is a life-long learning experience. I really enjoyed the discussion on getting academics interested in intercultural capacity and the benefits that can actually add to their content.”

What did you enjoy most about the session? “The inspiring experts with their experience and perspectives, interactive session, the Inclusive Curriculum Framework is really well-structured and thought-through.”

Feedback from students

“This was a great event that was so helpful in helping me understand more about myself and how to self-reflect. Thanks to everyone at Viadrina for hosting an excellent event.”

What did you enjoy most about the session? “The trustful and appreciative atmosphere, the body exercises, the encouragement to overcome fear and hesitation.”

INU Student Seminar for Global Citizenship & Peace



The INU Student Seminar for Global Citizenship and Peace is a unique immersion program which is usually hosted by Hiroshima University in Japan, but for 2021 will be delivered online. The seminar is structured around the August 6 commemoration of the atomic bombing of Hiroshima.

Each year has a different theme, with workshops, group work and intercultural learning activities, which culminate in a United Nations (UN) General Assembly role-play.

The program for 2021 looks a little different than usual, due to the online nature of the program, however, will be nonetheless engaging. The theme is **“Understanding global inequalities: Bridging the gaps”** and will provide an opportunity to explore and reflect the impact of inequalities on global peace and the full realisation of

human potential in the world hit by the pandemic. In this context, the seminar will also critically consider the potential for actions that aim to address inequalities and to bridge the existing gaps.

Previous seminar themes include:

- The health of democracy (2019)
- Food and water insecurity (2018)
- Free and Equal: The United Nations Turns to Human Rights Protection Based on Sexual Orientation and Gender Identity (SOGI) (2017)
- Indigenous rights in the global context (2016)

We’re looking forward to hosting an in-person seminar at Hiroshima University in 2022, all being well.

www.inunis.net/studentseminar

Activities run by INU members

Other events hosted by INU member institution, and open to students and staff across the INU network in 2021 include:

De Montfort University (UK) deliver an event, marking International Day of UN Peacekeepers, on Leveraging the Power of Youth for Peace and Security, International Day of UN Peacekeepers - 'The Road to a Lasting Peace' in May 2021

This year the challenges and threats faced by UN Peacekeepers are even greater than ever. Like people around the world, they are having to cope not only with the COVID-19 pandemic but also the continued requirement to support and protect others in the countries in which they are based.

This event has been organised by De Montfort University as part of its role as United Nations Academic Impact hub for Sustainable Development Goal 16: Peace, Justice and Strong Institutions, in collaboration with United Nations Peacekeeping.

Parahyangan Catholic University (UNPAR) in Indonesia host an International Student Conference for Global Citizenship on Food Loss and Food Waste in July -August 2021.

This event gathers university students from Indonesia and international students from all over the world in Universitas Katolik Parahyangan's Bandung campus, Indonesia, although for 2021, this will

be a virtual event online. Participants will learn through a series of lectures, share their thoughts, and be introduced to Indonesian cultures. The conference involves professors, both international and local students, bureaucrats, practitioners, government organization and NGOs.

Food loss and food waste forms part of the United Nations Sustainable development goals and INU member, Parahyangan Catholic University (UNPAR) in Indonesia has designed this programme to enable students to consider its environmental, social and economic impact across the world.

<https://isc-io.unpar.ac.id/>

- Universidad Nacional del Litoral (UNL) in Argentina run a virtual International Winter School of Latin American contemporary challenges from 26th July- 13th August 2021

This year's programme run by UNL will focus on the theme of "Ten objectives for the sustainable development of Latin America". The program will be delivered online and in Spanish.

www.unl.edu.ar/escueladeinvierno

Henry Fong Award

Dr Henry Fong Yun-Wah is a prominent Hong Kong business leader, philanthropist and Honorary Doctor of Letters at La Trobe University in Australia. Through his generous donation the International Network of Universities took an important step towards fulfilling its mission of fostering global understanding and cooperation between universities and citizens in developed and less developed

nations, by offering Awards to outstanding students within the INU network.

The Award comprises a scholarship to study for a maximum of one semester at another INU member university and a stipend of \$2,000 to support travel costs and living expenses.

Henry Fong Award winner was Alanna Letedara, student at Universitas Katolik Parahyangan, Indonesia.

"Winning the Henry Fong Award is an absolute privilege that I am beyond grateful to receive. The opportunity to be immersed in an enriching cross-cultural learning experience is an entrusted responsibility that I am determined to honor by not becoming a world of one but by taking part in global citizenship. Thank you INU for investing in our future!"

Alanna has expressed an interest in visiting Kingston University, UK or James Madison University, USA.



Finances

In 2021, INU received \$76,720 in memberships fees.

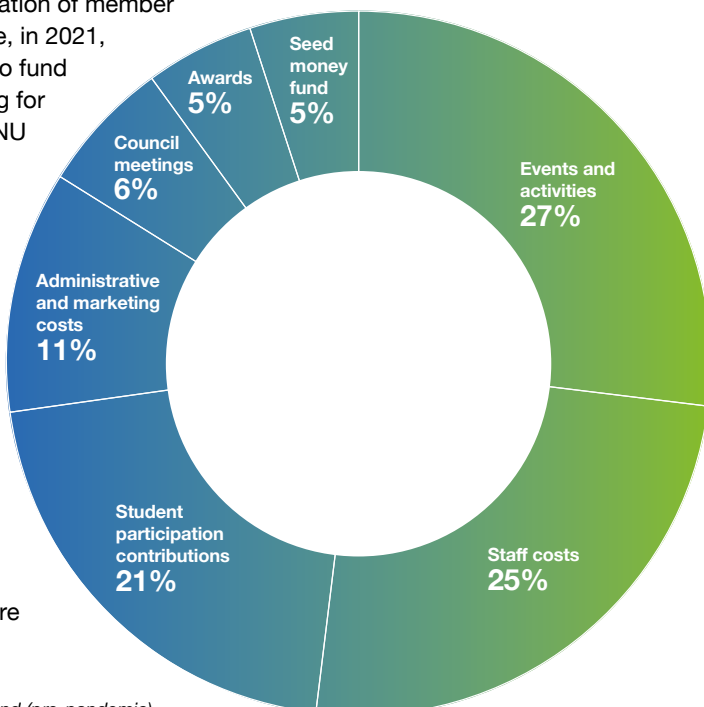
Since global travel and international events have been restricted, expenditure on INU activities in 2020 and 2021 has differed significantly to previous years. Whilst ordinarily, funds would be used to facilitate staff and student travel to participate in events and activities, in 2020 and 2021, these activities have been moved online, with limited cost. Funds have therefore been invested in alternative opportunities to further internationalisation of member institutions. For example, in 2021, \$19,500 was allocated to fund Virtual Exchange training for academic staff across INU member institutions.

Expanding activities online have enabled INU to reach wider audiences at member Universities, to broaden the impact of the INU network. These free events mean INU continues its work, and yet does not impact its finances, resulting in a healthy balance to invest in future activities.

Key facts

- Pre-pandemic, over half of INU's income is given back to member universities to fund activities for staff and students.
- \$5,000 are allocated to creative ideas that support internationalisation and global engagement through our Seed Money Fund.

We look forward to financially supporting student and staff mobility and our in-person events as soon as the global situation with the pandemic enables us to do so.



An example of INU budget spend (pre-pandemic)

Joining the INU Network

The International Network of Universities welcomes expressions of interest to join the network from institutions who align to our key values and mission, and who embrace the internationalization movement across their University.

The INU seeks to have a broad representation of institutions across the world, with members who actively contribute, participate, and add value to the network.

We would be particularly keen to hear from potential members who can demonstrate their commitment to global citizenship and engagement as part of their international strategy, and who have a commitment to active involvement and participation INU activities.

INU expects that senior management of each member institution is also committed to the network and fully supports the application to join.

Membership fees are paid annually at the beginning of each calendar year.

For further information on how to become a member of INU, please contact the INU coordinator for further information:
INU@kingston.ac.uk

 INU INTERNATIONAL NETWORK OF UNIVERSITIES The Network for Global Engagement	
 DE MONTFORT UNIVERSITY LEICESTER	
	 JAMES MADISON UNIVERSITY
Kingston University London	 MALMÖ UNIVERSITY
	 UNIVERSITAT ROVIRA I VIRGILI
 UNIVERSIDAD NACIONAL DEL LITORAL	

If you would like further information about the International Network of Universities or would like to participate in an INU activity, please contact:

INU Coordinator

E INU@kingston.ac.uk

T +44 (0)20 8417 3256

facebook.com/INUnetwork

linkedin.com/company/international-network-of-universities

inunis.net