

# **INTERNATIONAL NETWORK OF UNIVERSITIES**

## **QUESTIONNAIRE ON RESEARCH STRENGTHS AND EMERGING AREAS OF RESEARCH FOCUS IN PREPARATION FOR THE INU RESEARCH WORKSHOP**

---

### **FLINDERS UNIVERSITY**

Sturt Road, Bedford Park, Adelaide, South Australia 5042

[www.flinders.edu.au](http://www.flinders.edu.au)

#### **1. GENERAL INFORMATION ON FLINDERS UNIVERSITY**

Flinders University is a public university, located at Bedford Park, Adelaide, South Australia. It comprises four academic Faculties, Central Administration and the Library. An organisational chart is attached (Appendix One).

The Faculties incorporate 19 individual schools and departments. The Yunggoendi First Nations Centre for Higher Education and Research is also involved with teaching. Central Administration incorporates the Office of the Executive Director of Administration and five divisions. The Flinders Art Museum has galleries on campus and in the central business district of Adelaide.

Research is carried out in the four Faculties and a number of specialist centres and institutes. Flinders also has a number of teaching and/or research centres outside Adelaide, notably the Lincoln Marine Science Centre in Port Lincoln, South Australia, and the Northern Territory Clinical School in Darwin and the Centre for Remote Health in Alice Springs, both in the Northern Territory.

The University is also a shareholder in a number of commercial entities.

Staff (FTEs)–General:	888
Staff (FTEs)–Academic:	606
Staff (individuals)–General:	996
Staff (individuals)–Academic:	653

## 2. GENERAL INFORMATION–RESEARCH

### 2.1 Students (EFTSL)

<i>Area of study</i>	<i>PhD</i>	<i>Masters Research</i>	<i>PhD Coursework</i>	<i>Masters Coursework</i>
Law	3.20	6.30	0.00	0.00
Accounting, Administration, Economics, Commerce	26.35	0.22	0.00	184.83
Humanities	68.17	17.61	0.00	31.12
Mathematics, Statistics	3.57	0.00	0.00	0.00
Behavioural Science, Social Studies	106.01	11.25	0.00	255.67
Computing, Built Environment, Health	32.67	2.25	13.83	131.04
Foreign Languages, Visual and Performing Arts	17.85	8.09		7.79
Engineering, Science, Surveying	129.61	8.08	0.00	49.25
Dentistry, Medicine, Veterinary Science	74.27	10.19	0.00	4.83
Agriculture	0.00	0.00	0.00	17.58
11 National Priority - Education	26.75	1.22	13.42	199.37
12 National Priority - Nursing	19.91	8.02	0.00	34.17
	<b>73.24</b>	<b>508.36</b>	<b>27.25</b>	<b>915.67</b>

### 2.2 Annual research income

Internal sources	\$5 612 232
External sources	\$28 825 916

### 2.3 Annual (2004 reported) research publication outputs

Books + (book chapters)	27 + (105)
Refereed journal articles	709
Refereed conference papers	116
Research reports	N/A
Consultancy reports	N/A

### 2.4 Research institutes

Flinders University has a collection of institutes and centres. A small number of these relate to areas of strength but the Areas of Strategic Research Investment (ASRIs) as outlined in **Q3: Self-identified research strengths and Areas of emerging interest**, are more indicative of research focus and strength. The following examples of a University institute and centre are also situated within one or more of the University's ASRIs.

- *National Institute of Labour Studies (NILS)*

The National Institute of Labour Studies has a record of research excellence and delivery of high quality work to budget and on time. In all its work, it combines theoretical understanding with sophisticated empirical skills. NILS undertakes research and consulting in the key areas of: analysis of labour market developments at national, industry, occupational and regional levels; industrial relations developments and issues; employment, unemployment and labour mobility; labour productivity and workplace performance; employee and management opinion surveys; education and training; immigration; earnings and wage trends; human resources management.

- *Research Centre for Injury Studies*

The Research Centre for Injury Studies aims to contribute to reducing the burden of human injury and adding to the knowledge of the nature, causes, effects and control of injury. The Centre undertakes research, surveillance, analysis, consultation, and teaching, and disseminates information on injury control and related matters to public health and other practitioners, academics, government and the community.

## **2.5 Research training support**

Research students are supported financially through externally funded scholarships and internally funded scholarships. The Scholarships Committee and the University Higher Degrees Committee monitor the quality of prospective higher degree students with reference to their academic background. Faculty Higher Degree Committees examine the academic environment in which the student proposes to work, to ensure that appropriate resources and supervision are available for the proposed research. The University is working to establish a statement of minimum resources for research higher degree students, to ensure all research higher degree students at Flinders receive high quality support.

From 2005, a University-wide Induction Day for new research higher degree students has been run twice a year. The program presents the students with the essential things to know when beginning a research higher degree and provides information on the roles, expectations, rights and responsibilities of students, staff, departments and support services.

The University also provides a Research Higher Degree Professional Development Program (RHDPDP) which offers research higher degree students access to a wide range of activities developed specifically for them and also to the same range of training opportunities as staff members.

The University is also planning to introduce cotutelle PhD degrees during 2006.

## **3. SELF-IDENTIFIED RESEARCH STRENGTHS AND AREAS AND AREAS OF EMERGING INTEREST**

Flinders University is operating in a changing research funding environment which increasingly directs funding to areas of research concentration. In 2003, a strategy was launched whereby the University would identify flagship areas of research, Areas of Strategic Research Investment (ASRIs), to which future research support would be differentially directed.

ASRIs must be areas in which Flinders has, or has the capacity to develop, a reputation as a national or international leader. Identification as an ASRI comes after a rigorous and competitive internal process during which proposals are assessed by a panel involving external members. ASRIs are expected to develop cross-institutional and cross-disciplinary research collaborations, especially in the context of external funding. By definition, these research areas include both those in which the University has a tradition of high achievement, and those areas in which the capacity to develop has been identified.

A summary of current ASRIs is attached. Two more are presently under development: *Musculoskeletal Health* and *Immune Strategies for Improved Population Health*.

## AREAS OF STRATEGIC RESEARCH INVESTMENT (ASRIs)

The table below lists areas of research focus that had been accorded ASRI status by the end of 2005. The table also indicates the breadth of participation across the four University Faculties—Faculty of Health Sciences (FHS); Faculty of Social Sciences (FSS); Faculty of Science and Engineering (FSE) and Faculty of Education, Humanities, Law and Theology (EHLT).

NAME	DESCRIPTION	LEADERS	PARTICIPATING FACULTIES			
			FHS	FSS	FSE	EHLT
<b>ABORIGINAL HEALTH RESEARCH UNIT</b>	<p>This group's health scientists, educators and psychologists, based in Adelaide and Alice Springs, are core partners in the CRC for Aboriginal Health and the national Centre for Clinical Research Excellence in Aboriginal and Torres Strait Islander Health.</p> <p><i><a href="http://aboriginalhealth.flinders.edu.au">http://aboriginalhealth.flinders.edu.au</a></i></p>	<p><b>LEADER:</b> Dr Inge Kowanko</p> <p><b>DEVELOPMENT OFFICER:</b> Ms Kim O'Donnell</p>	X	X		X
<b>APPLIED COGNITIVE PSYCHOLOGY</b>	<p>Cognitive psychology addresses a diverse array of contemporary human phenomena, suggesting practical solutions for many real world problems. Our concentration of internationally-renowned researchers in fundamental areas of human cognition applies cognitive psychological principles to practical issues as diverse as autism, brain function in psychopathology, decision-making, eating disorders, eyewitness memory, human adaptation throughout the lifespan, trauma reactions, and sleep disorders.</p> <p><i><a href="http://acp.flinders.edu.au">http://acp.flinders.edu.au</a></i></p>	<p><b>LEADER:</b> Professor Neil Brewer</p> <p><b>DEVELOPMENT OFFICER:</b> Dr Carolyn Semmler</p>	X	X		X
<b>BIOKNOWLEDGE: UNDERSTANDING AND INTERPRETING AUSTRALIAN BIODIVERSITY AND LANDSCAPES</b>	<p>Future plans of state and national governments address environmentally sustainable development in parallel with conservation. This group brings together researchers from ecology, ecotourism, cultural tourism, earth sciences, geography, screen studies and education to create a knowledge base for implementing such plans.</p> <p><i><a href="http://bioknowledge.flinders.edu.au">http://bioknowledge.flinders.edu.au</a></i></p>	<p><b>LEADERS:</b> Dr Duncan Mackay Associate Professor Mike Schwarz</p> <p><b>DEVELOPMENT OFFICER:</b> Ms Christine Maher</p>		X	X	X

<b>CENTRE FOR THE ANALYSIS OF EDUCATIONAL FUTURES</b>	<p>Research in the Centre is directed towards the development and use of evidence that will support sound educational policy and practice. Centre staff work with university colleagues, educational organisations and industry to help specify research needs, identify sources of funding support and undertake research that will provide a sound basis for future educational action.</p> <p><i><a href="http://caef.flinders.edu.au">http://caef.flinders.edu.au</a></i></p>	<b>LEADER:</b> Professor Mike Lawson	X	X	X	X
<b>EYE AND VISION COLLABORATIVE GROUP</b>	<p>This multidisciplinary group's focus is on the relationship between vision and the health and wellbeing of individuals and populations. The group has many collaborations and is actively pursuing links with relevant industries, particularly the optics industry centred in Adelaide.</p> <p><i><a href="http://vision.flinders.edu.au">http://vision.flinders.edu.au</a></i></p>	<b>LEADERS:</b> Professor Doug Coster Associate Professor Keryn Williams  <b>DEVELOPMENT OFFICER:</b> Mr Matt Freeman	X			
<b>FLINDERS CANCER CONTROL ALLIANCE (FCCA)</b>	<p>The Alliance brings together researchers and practitioners to develop strategies and innovative solutions for the control of cancer through prevention, screening, clinical trials of new cancer therapies, and better treatments and support for people affected by cancer.</p> <p><i><a href="http://cancercontrol.flinders.edu.au">http://cancercontrol.flinders.edu.au</a></i></p>	<b>LEADERS:</b> Professor Graeme Young, Professor David Watson  <b>DEVELOPMENT OFFICER:</b> Dr Rhys Williams	X	X	X	
<b>FLINDERS CLINICAL CHANGE AND HEALTH CARE RESEARCH CENTRE</b>	<p>We aim to build an evidence base for the planning of optimum treatments and cost effective coordinated models of health care delivery in a variety of settings eg hospital, intermediate care, residential and primary care.</p> <p><i><a href="http://clinicalchange.flinders.edu.au">http://clinicalchange.flinders.edu.au</a></i></p>	<b>LEADERS:</b> Professor Paddy Phillips Professor Maria Crotty Professor David Currow  <b>DEVELOPMENT OFFICER:</b> Ms Stacey Masters	X			

<b>FLINDERS INTERNATIONAL ASIA PACIFIC: INTERNATIONAL SECURITY, TRANSNATIONAL RISK ASSESSMENT AND DEVELOPMENT SOLUTIONS</b>	<p>Australia's security and prosperity are closely linked with those of its regional neighbours. This group offers research and consulting expertise across a range of contemporary and future transnational policy, security and risk issues. The group is developing marketable applications of its research, appropriate to the needs of industry, government, and communities.</p> <p><i><a href="http://fiap.flinders.edu.au">http://fiap.flinders.edu.au</a></i></p>	<p><b>LEADER:</b> Associate Professor Susanne Schech</p> <p><b>DEVELOPMENT OFFICER:</b> Dr Peter Burns</p>		X		X
<b>FLINDERS MEDICAL DEVICES AND TECHNOLOGIES (FMDAT)</b>	<p>Technological advances in biology and medicine increasingly depend on contributions from the physical sciences, mathematics and engineering. They emerge from basic research applied, through design and development, to clinical trials and commercialisation.</p> <p><i><a href="http://fmdat.flinders.edu.au">http://fmdat.flinders.edu.au</a></i></p>	<p><b>LEADER:</b> Associate Professor Karen Reynolds</p> <p><b>DEVELOPMENT OFFICER:</b> Ms Joanna Close</p>	X	X	X	
<b>FLINDERS NANOSTRUCTURES AND MOLECULAR INTERACTIONS (NMI) RESEARCH GROUP</b>	<p>Novel, innovative and cross-disciplinary research unites medical researchers, chemists, physicists, biologists and biotechnologists in the task of improving people's quality of life. This includes providing advances in health care, cleaner choices in environmental management, and greater choices and efficiency for the advanced manufacturing industries.</p> <p><i><a href="http://nmi.flinders.edu.au">http://nmi.flinders.edu.au</a></i></p>	<p><b>LEADERS:</b> Professor Kevin Wainwright Dr Martin Johnston</p> <p><b>DEVELOPMENT OFFICER:</b> Dr Helen Sargent</p>	X		X	
<b>FLINDERS RESEARCH CENTRE FOR COASTAL AND CATCHMENT ENVIRONMENTS (FRC<sub>3</sub>E)</b>	<p>This group brings exceptional multidisciplinary capability to research which will guide the sustainable management of aspects of the water cycle relevant to coastal and catchment environments. The group already provides advice and research services to water industries and all levels of government.</p> <p><i><a href="http://frcce.flinders.edu.au">http://frcce.flinders.edu.au</a></i></p>	<p><b>LEADER:</b> Professor Howard Fallowfield</p> <p><b>DEVELOPMENT OFFICER:</b> Mr John Goslino</p>	X	X	X	

<b>HEALTH AND SOCIETY: EQUITY, WELLBEING AND THE SOCIAL AND ECONOMIC DETERMINANTS OF HEALTH</b>	<p>This group provides a focus for Flinders' established reputation for research into the labour market; housing, structure of suburban environments; economic, social and structural determinants of risky and unhealthy behaviours; and social, cultural and economic barriers to health and other related service use.</p> <p><i><a href="http://healthandsociety.flinders.edu.au">http://healthandsociety.flinders.edu.au</a></i></p>	<p><b>LEADERS:</b> Professor Fran Baum, Professor Charlotte de Crespigny</p> <p><b>DEVELOPMENT OFFICER:</b> Dr Margaret Robinson</p>	X	X	X	X
<b>HUMANITIES RESEARCH CENTRE FOR CULTURAL HERITAGE AND CULTURAL EXCHANGE</b>	<p>This group of over 80 researchers reflects Flinders University's distinctive combination of research across archaeology, major European languages, history, cinema studies and cultural tourism. One focus will be the use of open access publishing and digital repositories for the exchange of knowledge generated by the group.</p> <p><i><a href="http://fhrc.flinders.edu.au">http://fhrc.flinders.edu.au</a></i></p>	<p><b>LEADER:</b> Dr Robert Phiddian</p> <p><b>DEVELOPMENT OFFICER:</b> Dr Rebecca Vaughan</p>		X		X
<b>NEUROSCIENCE: RESEARCHING THE NERVOUS SYSTEM IN HEALTH AND DISEASE</b>	<p>Neuroscience research will translate into improved health care, commercialisation of inventions, and the development of health, education and social policy to address the huge direct and indirect costs arising from disorders of the brain and mind.</p> <p><i><a href="http://neuroscience.flinders.edu.au">http://neuroscience.flinders.edu.au</a></i></p>	<p><b>LEADER:</b> Professor Simon Brookes</p> <p><b>DEVELOPMENT OFFICER:</b> Dr Patrick Falckh</p>	X	X		
<b>SOCIAL MONITORING NAD POLICY FUTURES NETWORK</b>	<p>This research group brings together policy analysis with wide expertise in monitoring and assessing key dimensions of social change. Its research generates in-depth understanding of specific social issues and problems, along with knowledge of broad social trends.</p> <p><i><a href="http://smpf.flinders.edu.au">http://smpf.flinders.edu.au</a></i></p>	<p><b>LEADER:</b> Associate Professor Bill Martin</p> <p><b>DEVELOPMENT OFFICER</b> Dr Deb King</p>	X	X		X

## **5. FUNDING SOURCES**

Flinders University is an active, and successful, applicant to the national competitive grants within Australia. Major sources of funding are the National Health and Medical Research Council (NHMRC) and the Australian Research Council (ARC). The University also receives funding from the National Institutes of Health (USA) and is actively seeking to increase our funding from these and other international sources.

One of the criteria by which ASRI status is awarded to a research group is that of industry collaboration and involvement. The University is seeking to increase the amount of funding from industry, community and government sources. It already has a record of collaborations with local, state and federal commonwealth agencies and has established similar collaborations with specific industries.

## **6. CONTACT INFORMATION**

Professor Chris Marlin  
Deputy Vice-Chancellor (Research)  
[Chris.Marlin@flinders.edu.au](mailto:Chris.Marlin@flinders.edu.au)

Ms Christine Steele  
Head, Office of Research  
[Christine.Steele@flinders.edu.au](mailto:Christine.Steele@flinders.edu.au)

## **7. COMMENTS ON PROGRAM FOR RESEARCH WORKSHOP**

As discussed previously with Gunilla Carlecrantz, we have previously taken a leading role in an exercise among six Australian universities to identify areas of common research strength/interest. Some time will have to be allowed during the workshop to take the results of this questionnaire from all INU universities and then to identify areas in which research collaboration might be fruitful. We would be happy to discuss further the form that this discussion might take.

## **8. NAME, DATE AND EMAIL FOR FURTHER INFORMATION**

Ms Katrina Hall  
Executive Officer to the Deputy Vice-Chancellor (Research)  
[Katrina.hall@flinders.edu.au](mailto:Katrina.hall@flinders.edu.au)

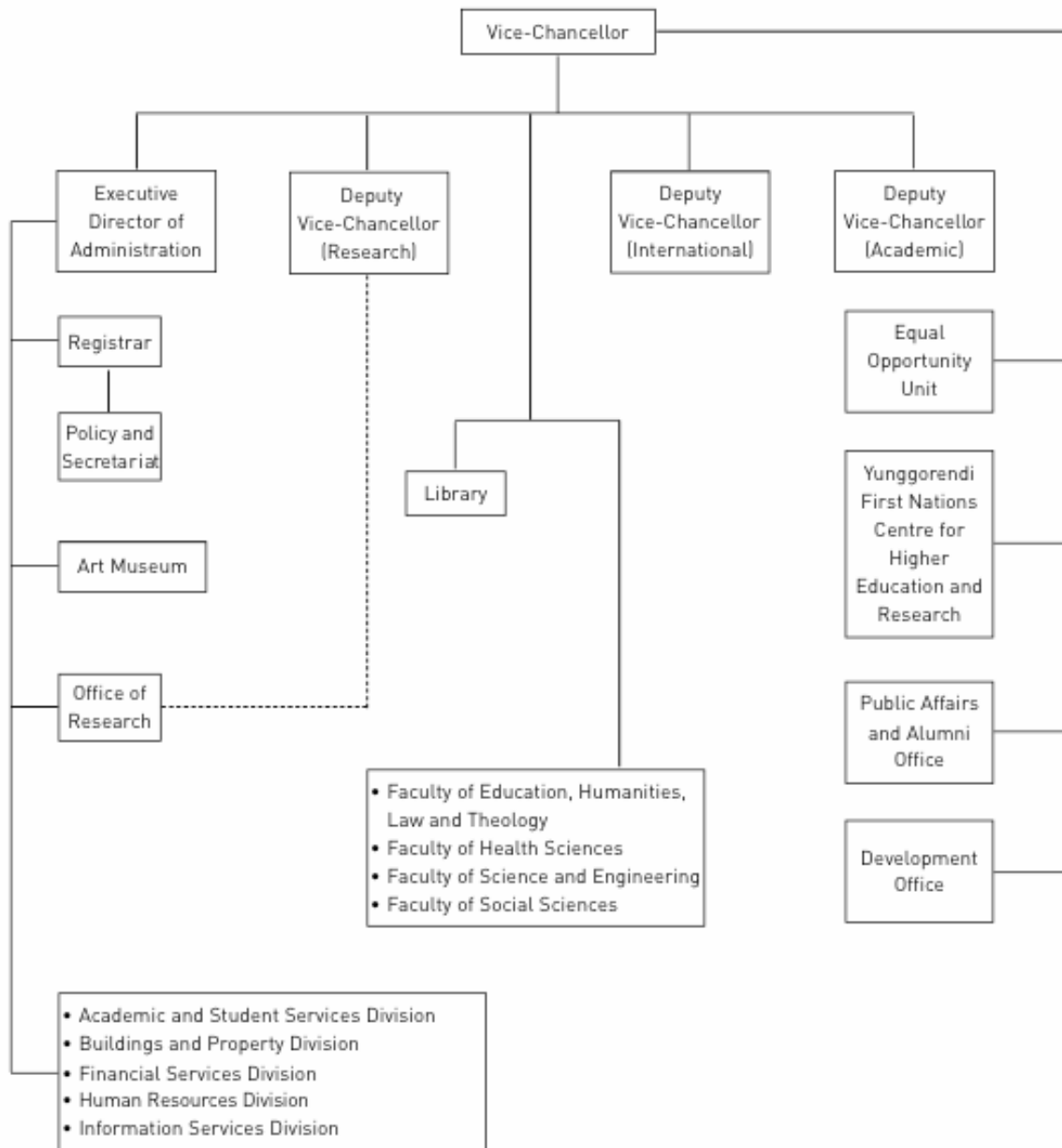
30 April 2006

APPENDIX ONE



# Flinders University

## Administrative Structure



Dec 2005